



320B/320B L/LN
322B L/LN
325B L/LN
330B L/LN
345B L
Straight Demolition Booms

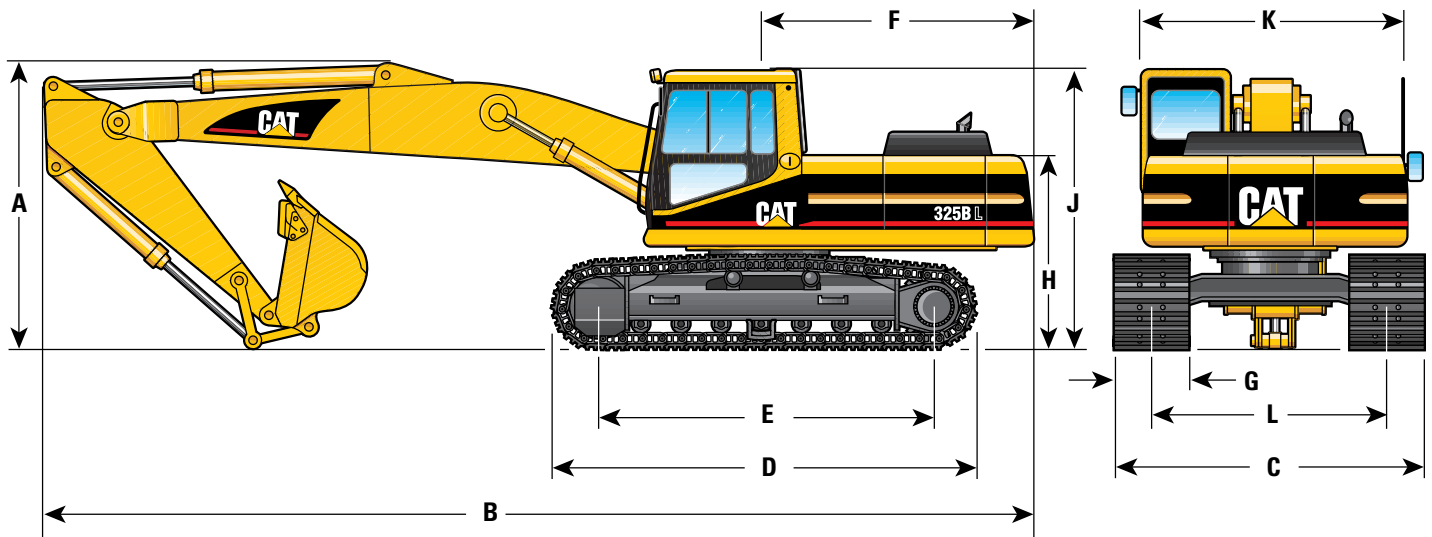


	320B /L/LN	322B L/LN	325B L/LN	330B L/LN	345B L
Cat® engine					
Gross power	100 kW	120 kW	132 kW	176 kW	233 kW
Flywheel power	95.5 kW	114 kW	125 kW	165 kW	216 kW
Operating weights	20.8-23.2 t	24-25.5 t	27-29.7 t	34.3-37.3 t	49.8-50.3 t
Travel Speed (maximum)	5.5 km/h	5.5 km/h	5.0 km/h	4.6 km/h	4.4 km/h
Drawbar pull	177 kN	194 kN	215 kN	268 kN	319 kN

JC Machinery **SUNLIGHT**
excavatorhunter.com

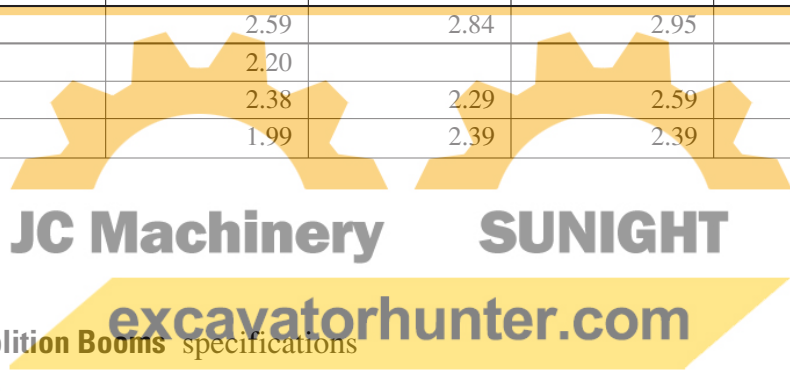
Dimensions

All dimensions are approximate.

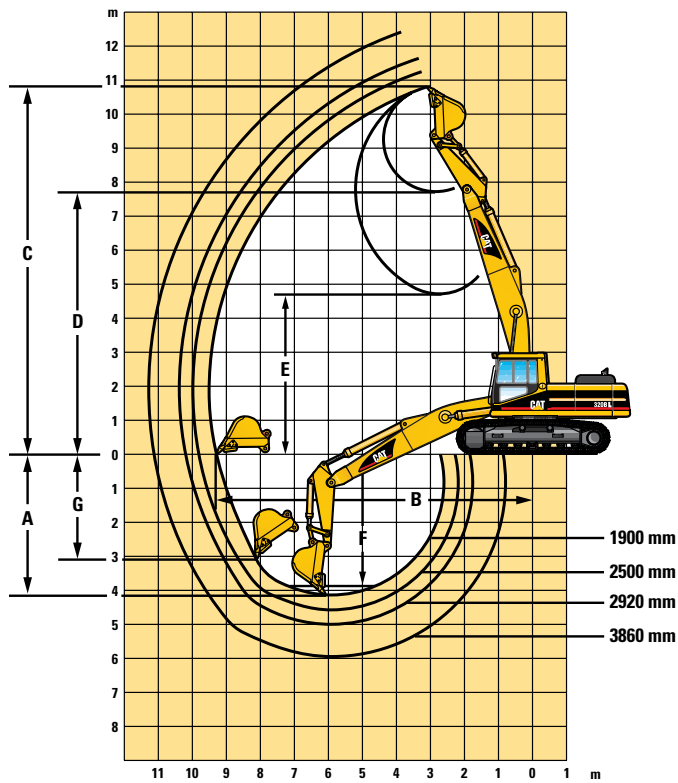


A Shipping height	320B /L/LN	m	322B L/LN	m	325B L/LN	m	330B L/LN	m	345B L	m
stick	R1.9B	3.00	R2.5S	3.05	R2.0D	3.10	R2.15E	3.25	R2.9T	3.82
stick	R2.5B	2.80	R2.9S	3.07	R2.65C	2.99	R2.8D	3.20	R3.4T	4.00
stick	R2.9B	2.80			R3.2C	3.10	R3.3D	3.60	D4.0T	4.30
stick	D3.9B	4.00					R3.9D	3.60		
B Shipping length										
stick	R1.9B	10.10	R2.5S	10.45	R2.0D	10.80	R2.15E	11.80	R2.9T	12.55
stick	R2.5B	9.70	R2.9S	10.37	R2.65C	10.30	R2.8D	10.70	R3.4T	12.45
stick	R2.9B	9.70			R3.2C	10.30	R3.3D	10.50	D4.0T	12.35
stick	D3.9B	9.40					R3.9D	10.70		
C Shipping width*		2.80								
L		2.98		3.39		3.39		3.34		2.99
LN		2.49		2.99		2.99		2.99		
D Track length		4.05								
L/LN		4.45		4.63		4.66		5.02		5.37
E Length to centers of rollers		3.25								
L/LN		3.65		3.83		3.80		4.04		4.34
F Tail swing radius		3.05		2.85		3.05		3.50		3.65
G Standard shoe width		0.60								
L		0.60		0.80		0.80		0.75		0.60
LN		0.50		0.60		0.60		0.60		
H Body height		2.00		2.10		2.13		2.26		2.53
J Cab height										
without FOGS		3.10		3.10		3.14		3.25		3.45
with FOGS		3.25		3.25						3.61
K Body width with bumpers		2.59		2.84		2.95		3.10		2.99
L Track gauge		2.20								
L		2.38		2.29		2.59		2.59		2.39
LN		1.99		2.39		2.39		2.39		

* Without bumper-reinforced skirt

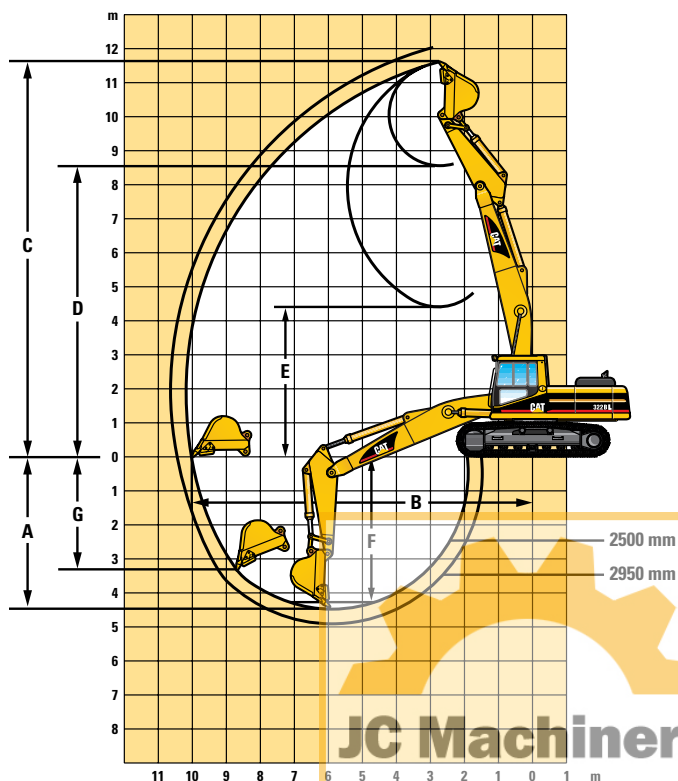


320B/320B L/LN Working Ranges – Straight Boom 6.02 m



Stick	R1.9C	R2.5B	R2.92B	R3.86B
Bucket Tip Radius	1.55 m	1.41 m	1.41 m	1.41 m
A Maximum Digging Depth	4.15 m	4.60 m	5.00 m	5.95 m
B Maximum Reach at Ground Level	9.30 m	9.80 m	10.20 m	11.10 m
C Maximum Cutting Height	10.80 m	11.25 m	11.65 m	12.40 m
D Maximum Loading Height	7.70 m	8.50 m	8.90 m	9.65 m
E Minimum Loading Height	4.70 m	4.10 m	3.65 m	2.90 m
F Maximum Digging Depth 2.44 m Level Bottom	3.90 m	4.40 m	4.80 m	5.80 m
G Maximum Vertical Wall Digging Depth	3.10 m	3.60 m	4.00 m	4.90 m

322B L/LN Working Ranges – Straight Boom 6.17 m

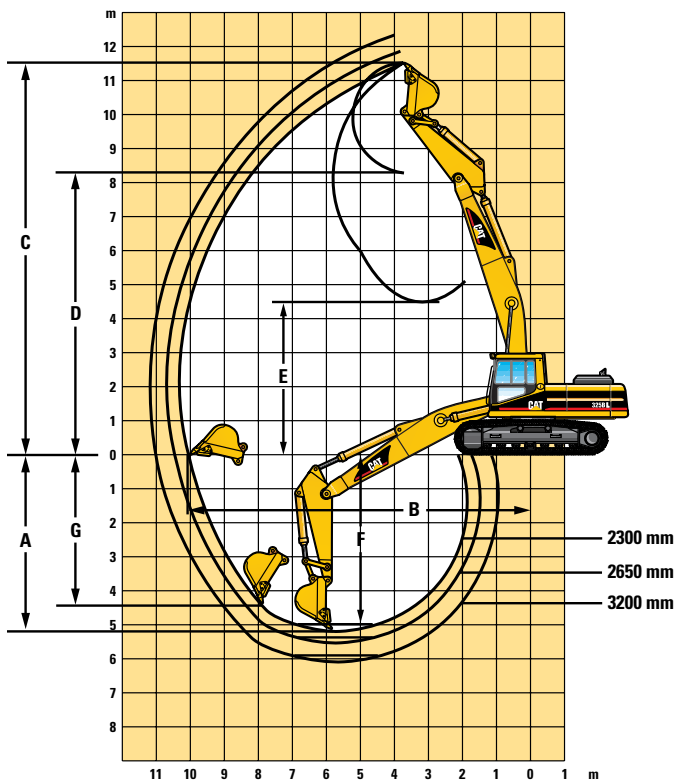


Stick	R2.5B	R2.95B
Bucket Tip Radius	1.55 m	1.55 m
A Maximum Digging Depth	4.50 m	4.95 m
B Maximum Reach at Ground Level	10.00 m	10.45 m
C Maximum Cutting Height	11.60 m	10.00 m
D Maximum Loading Height	8.55 m	8.90 m
E Minimum Loading Height	4.40 m	3.80 m
F Maximum Digging Depth 2.44 m Level Bottom	4.30 m	4.75 m
G Maximum Vertical Wall Digging Depth	3.35 m	3.75 m

JC Machinery SUNIGHT

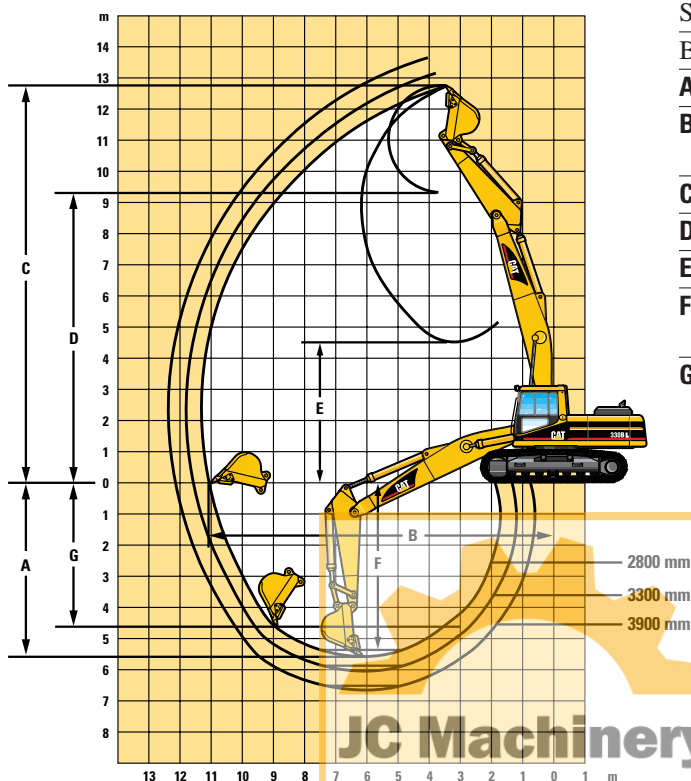
excavatorhunter.com

325B L Working Ranges – Straight Boom 6.48 m



Stick	2.30 m	2.65 m	3.20 m
Bucket Tip Radius	1.60 m	1.60 m	1.60 m
A Maximum Digging Depth	5.18 m	5.54 m	6.09 m
B Maximum Reach at Ground Level	10.10 m	10.48 m	11.01 m
C Maximum Cutting Height	11.47 m	11.84 m	12.24 m
D Maximum Loading Height	8.26 m	8.63 m	9.03 m
E Minimum Loading Height	4.49 m	4.05 m	3.47 m
F Maximum Digging Depth 2.44 m Level Bottom	4.99 m	5.36 m	5.93 m
G Maximum Vertical Wall Digging Depth	4.53 m	4.76 m	5.24 m

330B L Working Ranges – Straight Boom 6.87 m

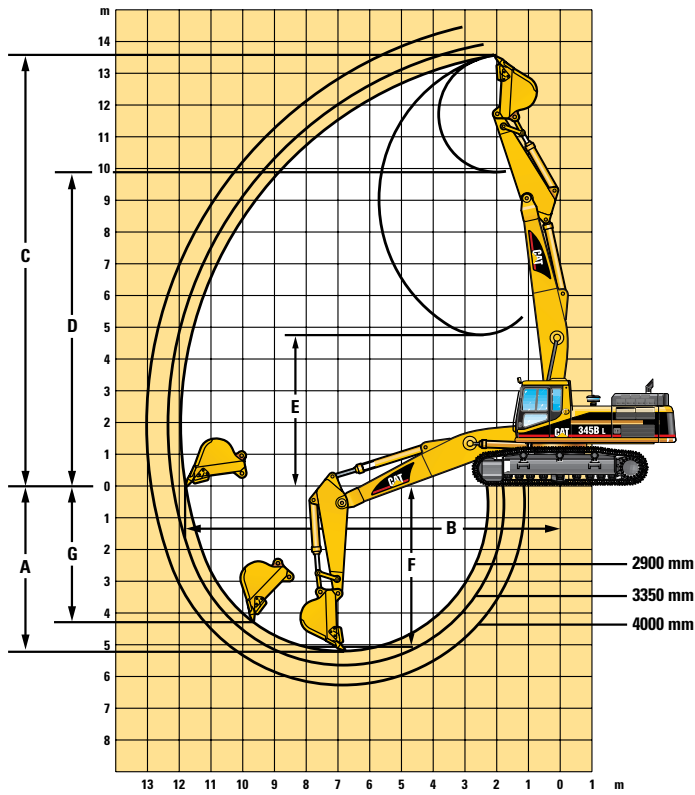


Stick	2.80 m	3.30 m	3.90 m
Bucket Tip Radius	1.85 m	1.85 m	1.85 m
A Maximum Digging Depth	5.56 m	6.06 m	6.66 m
B Maximum Reach at Ground Level	11.07 m	11.54 m	12.13 m
C Maximum Cutting Height	12.76 m	13.15 m	13.67 m
D Maximum Loading Height	9.31 m	9.70 m	10.23 m
E Minimum Loading Height	4.51 m	3.87 m	3.35 m
F Maximum Digging Depth 2.44 m Level Bottom	5.39 m	5.91 m	6.53 m
G Maximum Vertical Wall Digging Depth	4.62 m	5.04 m	5.52 m

JC Machinery SUNIGHT

excavatorhunter.com

345B L Working Ranges – Straight Boom 7.20 m



Stick	R2.9T	R3.35T	D4.0T
Bucket Tip Radius	1.82 m	1.82 m	1.82 m
A Maximum Digging Depth	5.20 m	5.65 m	6.30 m
B Maximum Reach at Ground Level	11.80 m	12.20 m	12.90 m
C Maximum Cutting Height	13.55 m	13.90 m	14.45 m
D Maximum Loading Height	9.80 m	10.20 m	10.70 m
E Minimum Loading Height	4.75 m	4.35 m	3.75 m
F Maximum Digging Depth 2.44 m Level Bottom	5.10 m	5.60 m	6.25 m
G Maximum Vertical Wall Digging Depth	4.30 m	4.75 m	5.40 m



JC Machinery SUNIGHT

excavatorhunter.com

Lift capacities with Straight boom

All weights are in kg

320B

Stick R1.9C

Shoes TG 600 mm

Bucket Capacity 1.15 m³

Bucket Weight 916 kg

	3.0 m		4.5 m		6.0 m		7.5 m		9.0 m		m	
9.0 m	*10331	*10331									*4943	*4943
7.5 m			*7416	6691							*4251	2895
6.0 m	*7468	*7468	*7764	6594	6037	3873					3366	2082
4.5 m			*8628	6108	5876	3727	3865	2370			2855	1704
3.0 m					5592	3471	3798	2308			2628	1530
1.5 m					5328	3231	3695	2213			2600	1500
Ground					5178	3094	3630	2152			2769	1609
-1.5 m			*6521	4830	5163	3081	*3313	2178			*2239	1869
-3.0 m												

320B

Stick R2.5B

Shoes TG 600 mm

Bucket Capacity 1.05 m³

Bucket Weight 758 kg

	3.0 m		4.5 m		6.0 m		7.5 m		9.0 m		m	
10.5 m												
9.0 m			*6099	*6099							*3061	*3061
7.5 m			*6031	*6031	*5794	4309					*2623	*2623
6.0 m			*5982	*5982	*6120	4340	4308	2785			*2441	2118
4.5 m			*8434	6772	6385	4192	4314	2790			*2375	1809
3.0 m			*9517	6178	6123	3954	4217	2700			*2392	1662
1.5 m			9243	5670	5862	3718	4101	2592			*2487	1631
Ground			8978	5440	5687	3560	4014	2511			*2670	1713
-1.5 m			*7828	5416	5626	3505	3989	2488			*2449	1948
-3.0 m			*5655	5521	*4405	3554						

320B

Stick R2.92B

Shoes TG 600 mm

Bucket Capacity 0.8 m³

Bucket Weight 677 kg

	3.0 m		4.5 m		6.0 m		7.5 m		9.0 m		m	
10.5 m											*3038	*3038
9.0 m			*5349	*5349							*2332	*2332
7.5 m			*4898	*4898	*4975	4463					*2016	*2016
6.0 m			*4808	*4808	*5259	4451	4444	2913			*1874	*1874
4.5 m	*6750	*6750	*6517	*6517	*6296	4290	4401	2873			*1823	1704
3.0 m			*9256	6356	6217	4043	4285	2766	3081	1923	*1835	1572
1.5 m			9405	5813	5938	3790	4153	2643	3043	1887	*1909	1542
Ground			9063	5517	5736	3607	4047	2544	3012	1857	*2055	1610
-1.5 m	*5511	*5511	*8420	5438	5644	3524	3999	2499			*2306	1806
-3.0 m			*6466	5499	*4991	3541	*3231	2538				
-4.5 m												

320B

Stick R3.86B

Shoes TG 600 mm

Bucket Capacity 0.8 m³

Bucket Weight 677kg

	3.0 m		4.5 m		6.0 m		7.5 m		9.0 m		m	
10.5 m			*4028	*4028							*2288	*2288
9.0 m					*3767	*3767					*1810	*1810
7.5 m					*3687	*3687	*3446	2980			*1602	*1602
6.0 m					*3647	*3647	*3808	2997	*2415	1966	*1503	*1503
4.5 m			*3611	*3611	*4142	*4142	*4246	2913	3148	1975	*1467	1359
3.0 m			*7626	6618	*5964	4114	4302	2769	3086	1917	*1482	1252
1.5 m			*9395	5946	5965	3798	4126	2605	3002	1838	*1546	1221
Ground			9039	5474	5680	3540	3972	2463	2926	1767	*1669	1263
-1.5 m	*5287	*5287	8787	5256	5508	3384	3873	2370	2886	1728	*1870	1396
-3.0 m	*8427	*8427	*7676	5225	5458	3339	3849	2348			*1960	1689
-4.5 m			*5373	5337	*4015	3403						



Load Point Height



Load Radius Over Front



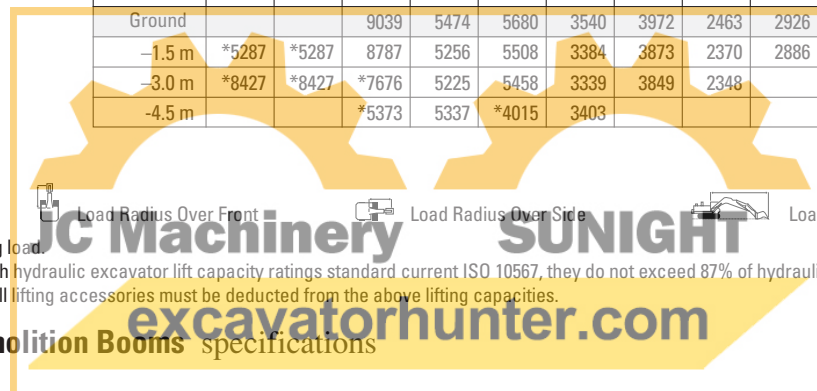
Load Radius Over Side



Load at Maximum Reach

* Limited by hydraulic rather than tipping load.

The above loads are in compliance with hydraulic excavator lift capacity ratings standard current ISO 10567, they do not exceed 87% of hydraulic lifting capacity or 75% of tipping capacity. Weight of all lifting accessories must be deducted from the above lifting capacities.



320B L

Stick
R1.9C
Shoes
TG 600 mm
Bucket Capacity
1.15 m³
Bucket Weight
916 kg

	3.0 m		4.5 m		6.0 m		7.5 m		9.0 m				m
9.0 m	*10331	*10331									*4943	*4943	5.23
7.5 m			*7416	*7416							*4251	3448	7.24
6.0 m	*7468	*7468	*7764	7719	*6198	4590					*4004	2537	8.36
4.5 m			*8628	7219	*6494	4440	4905	2892			3652	2118	8.99
3.0 m					*6808	4179	4836	2829			3390	1927	9.27
1.5 m					6808	3934	4730	2733			3363	1898	9.24
Ground					*6361	3796	*4658	2671			*3008	2027	8.9
-1.5 m			*6521	5906	*5253	3783	*3313	2697			*2239	*2239	8.29
-3.0 m													

320B L

Stick
R2.5B
Shoes
TG 600 mm
Bucket Capacity
1.05 m³
Bucket Weight
758 kg

	3.0 m		4.5 m		6.0 m		7.5 m		9.0 m				m
10.5 m													
9.0 m			*6099	*6099							*3061	*3061	6.23
7.5 m			*6031	*6031	*5794	4859					*2623	*2623	7.91
6.0 m			*5982	*5982	*6120	4890	*4579	3180			*2441	2433	8.92
4.5 m			*8434	7646	*6500	4740	5201	3186			*2375	2097	9.51
3.0 m			*9517	7035	*6944	4497	5101	3095			*2392	1939	9.79
1.5 m			*9904	6513	*7138	4257	4981	2985			*2487	1908	9.78
Ground			*9252	6277	*6911	4096	4891	2903			*2670	2001	9.48
-1.5 m			*7828	6252	*6059	4039	*4366	2880			*2449	2262	8.86
-3.0 m			*5655	*5655	*4405	4089							

320B L

Stick
R2.92B
Shoes
TG 600 mm
Bucket Capacity
0.8 m³
Bucket Weight
677 kg

	3.0 m		4.5 m		6.0 m		7.5 m		9.0 m				m
10.5 m											*3038	*3038	3.93
9.0 m			*5349	*5349							*2332	*2332	6.92
7.5 m			*4898	*4898	*4975	*4975					*2016	*2016	8.43
6.0 m			*4808	*4808	*5259	5003	*4629	3309			*1874	*1874	9.37
4.5 m	*6750	*6750	*6517	*6517	*6296	4839	*5250	3268			*1823	*1823	9.93
3.0 m			*9256	7218	*6825	4587	5171	3160	*3280	2231	*1835	*1835	10.2
1.5 m			*9926	6659	*7153	4329	5034	3036	3711	2195	*1909	1806	10.19
Ground			*9602	6355	7005	4143	4925	2937	*3044	2165	*2055	1883	9.9
-1.5 m	*5511	*5511	*8420	6274	*6384	4058	*4727	2891			*2306	2100	9.32
-3.0 m			*6466	6337	*4991	4076	*3231	2929					
-4.5 m													

320B L

Stick
R3.86B
Shoes
TG 600 mm
Bucket Capacity
0.8 m³
Bucket Weight
677 kg

	3.0 m		4.5 m		6.0 m		7.5 m		9.0 m				m
10.5 m			*4028	*4028							*2288	*2288	6.26
9.0 m					*3767	*3767					*1810	*1810	8.28
7.5 m					*3687	*3687	*3446	3381			*1602	*1602	9.53
6.0 m					*3647	*3647	*3808	3398	*2415	2277	*1503	*1503	10.35
4.5 m			*3611	*3611	*4142	*4142	*4246	3312	*3544	2286	*1467	*1467	10.85
3.0 m			*7626	7491	*5964	4663	*5079	3166	3759	2228	*1482	*1482	11.09
1.5 m			*9395	6801	*6789	4341	5012	3000	3673	2148	*1546	1459	11.08
Ground			*9694	6315	6954	4078	4853	2855	3595	2076	*1669	1509	10.82
-1.5 m	*5287	*5287	*9091	6091	*6671	3920	4749	2761	3554	2037	*1870	1656	10.3
-3.0 m	*8427	*8427	*7676	6059	*5755	3873	*4204	2739			*1960	*12960	9.36
-4.5 m			*5373	*5373	*4015	3939							



Load Point Height



Load Radius Over Front



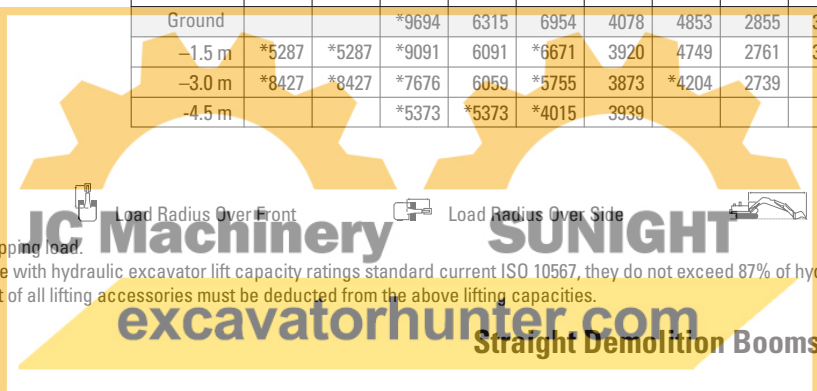
Load Radius Over Side



Load at Maximum Reach

* Limited by hydraulic rather than tipping load.

The above loads are in compliance with hydraulic excavator lift capacity ratings standard current ISO 10567, they do not exceed 87% of hydraulic lifting capacity or 75% of tipping capacity. Weight of all lifting accessories must be deducted from the above lifting capacities.



Lift capacities with Straight boom

All weights are in kg

320B LN

Stick

R1.9C

Shoes

TG 600 mm

Bucket Capacity

1.15 m³

Bucket Weight

916 kg

	3.0 m		4.5 m		6.0 m		7.5 m		9.0 m		m	
9.0 m	*10331	*10331									*4943	*4943
7.5 m			*7416	6348							*4251	2765
6.0 m	*7468	*7468	*7764	6253	*6198	3690					*4004	1983
4.5 m			*8628	5781	*6494	3547	4757	2253			3534	1617
3.0 m					*6808	3296	4687	2192			3276	1449
1.5 m					6606	3060	4581	2098			3250	1418
Ground					*6361	2928	4514	2038			*3008	1523
-1.5 m			*6521	4540	*5253	2915	*3313	2064			*2239	1773
-3.0 m												

320B LN

Stick

R2.5B

Shoes

TG 600 mm

Bucket Capacity

1.05 m³

Bucket Weight

758 kg

	3.0 m		4.5 m		6.0 m		7.5 m		9.0 m		m	
9.0 m			*6040	*6040							*3024	*3024
7.5 m			*5973	*5973	*5735	3910					*2583	2463
6.0 m			*5923	*5923	6063	3941	*4518	2462			*2398	1884
4.5 m			*8377	6149	*6443	3795	5003	2496			*2332	1592
3.0 m			*9461	5573	*6883	3563	4903	2408			*2349	1451
1.5 m			*9849	5080	6887	3332	4783	2302			*2443	1421
Ground			*9196	4858	6705	3177	4692	2222			*2629	1497
-1.5 m			*7772	4384	*6002	3123	*4309	2199			*2398	1715
-3.0 m			*5600	4936	*4349	3171						

320B LN

Stick

R2.92B

Shoes

TG 600 mm

Bucket Capacity

0.8 m³

Bucket Weight

677 kg

	3.0 m		4.5 m		6.0 m		7.5 m		9.0 m		m	
10.5 m			*5349	*5349							*3038	*3038
9.0 m			*4898	*4898	*4975	4112					*2332	*2332
7.5 m			*4808	*4808	*5259	4099	*4629	2667			*2016	*2016
6.0 m	*6750	*6750	*6517	6362	*6296	3942	5142	2628			*1874	1792
4.5 m											*1823	1539
3.0 m			*9256	5796	*6825	3699	5022	2522	*3280	1736	*1835	1414
1.5 m			*9926	5268	7014	3452	4885	2401	3593	1701	*1909	1383
Ground			*9602	4981	6804	3273	4776	2304	*3044	1671	*2055	1446
-1.5 m	*5511	*5511	*8420	4904	*6384	3191	4726	2260			*2306	1627
-3.0 m			*6466	4964	*4991	3208	*3231	2298				
-4.5 m												

320B LN

Stick

R3.86B

Shoes

TG 600 mm

Bucket Capacity

0.8 m³

Bucket Weight

677 kg

	3.0 m		4.5 m		6.0 m		7.5 m		9.0 m		m	
10.5 m			*4028	*4028							*2288	*2288
9.0 m					*3767	*3767					*1810	*1810
7.5 m					*3667	*3667	*3446	2731			*1602	*1602
6.0 m					*3647	*3647	*3808	2748	*2415	1776	*1503	1405
4.5 m			*3611	*3611	*4142	4047	*4246	2664	*3544	1785	*1467	1212
3.0 m			*7626	6045	*5964	3766	5046	2523	3642	1728	*1482	1110
1.5 m			*9395	5393	*6769	3457	4863	2362	3555	1650	*1546	1078
Ground					*9694	4934	6753	3204	4704	2221	3477	1580
-1.5 m	*5287	*5287	*9091	4722	6573	3051	4601	2130	3496	1542	*1870	1239
-3.0 m	*8427	*8427	*7676	4692	*5755	3006	*4204	2108			*1960	1512
-4.5 m			*5373	4801	*4015	3069						



Load Point Height



Load Radius Over Front



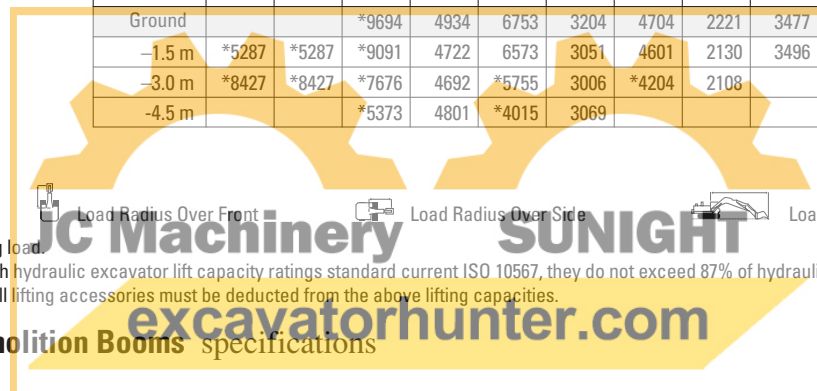
Load Radius Over Side



Load at Maximum Reach

* Limited by hydraulic rather than tipping load.

The above loads are in compliance with hydraulic excavator lift capacity ratings standard current ISO 10567, they do not exceed 87% of hydraulic lifting capacity or 75% of tipping capacity. Weight of all lifting accessories must be deducted from the above lifting capacities.



322B L

Stick
R2.5S

Shoes
TG 800 mm

Bucket Capacity
1.25 m³

Bucket Weight
903 kg

	3.0 m		4.5 m		6.0 m		7.5 m		9.0 m				m
9.0 m			*8096	*8096							*4369	*4369	6.71
7.5 m			*6945	*6945	*7284	5297					*3895	3060	8.27
6.0 m	*5431	*5431	*6876	*6876	*7452	5277	5967	3427			*3707	2412	9.22
4.5 m			*10454	8252	*7955	5081	5926	3390			*3667	2085	9.77
3.0 m					8485	4798	5800	3277			3572	1936	10.01
1.5 m					8184	4539	5666	3156			3564	1921	9.97
Ground			*10681	6805	8005	4393	5577	3076			*3604	2042	9.64
-1.5 m			*9114	6831	*7172	4350	*5233	3067			*2755	2349	9.0
-3.0 m					*5129	4436							

322B L

Stick
R2.95S

Shoes
TG 800 mm

Bucket Capacity
1.25 m³

Bucket Weight
903 kg

	3.0 m		4.5 m		6.0 m		7.5 m		9.0 m				m
10.5 m	*7741	*7741									*4143	*4143	4.86
9.0 m			*6243	*6243							*3198	*3198	7.4
7.5 m			*5399	*5399	*5836	5422					*2861	2725	8.81
6.0 m			*5311	*5311	*5996	5375	*5824	3512			*2719	2191	9.69
4.5 m			*7699	*7699	*7335	5169	5990	3445			*2688	1911	10.21
3.0 m			*11393	7741	*8306	4875	5845	3315	4218	2314	*2743	1779	10.44
1.5 m			*12038	7134	8247	4590	5682	3177	4167	2267	*2885	1762	10.4
Ground			*11483	6845	8028	4401	5579	3076	4133	2236	*3134	1862	10.1
-1.5 m	*5588	*5588	*9901	6805	*7575	4332	5539	3041			*2804	2112	9.49
-3.0 m			*7450	6921	*5842	4380	*3928	3098					

322B LN

Stick
R3.5S

Shoes
TG 800 mm

Bucket Capacity
1.25 m³

Bucket Weight
903 kg

	3.0 m		4.5 m		6.0 m		7.5 m		9.0 m				m
10.5 m													
9.0 m			*8096	*8096							*4369	*4369	6.71
7.5 m			*6945	*6945	*7284	5953					*3895	3468	8.27
6.0 m	*5431	*5431	*6876	*6876	*7452	5934	6151	3892			*3707	2763	9.22
4.5 m			*10454	9318	*7955	5733	6110	3854			*3667	2409	9.77
3.0 m					*8488	5444	5984	3739			3699	2249	10.01
1.5 m					8436	5178	5850	3617			3691	2235	9.97
Ground			*10681	7825	8257	5019	5760	3535			*3604	2370	9.64
-1.5 m			*9114	7852	*7172	4986	*5233	3526			*2755	2708	9.0
-3.0 m					*5129	5074							
-4.5 m													

322B LN

Stick
R2.95S

Shoes
TG 800 mm

Bucket Capacity
1.25 m³

Bucket Weight
903 kg

	3.0 m		4.5 m		6.0 m		7.5 m		9.0 m				m
10.5 m	*7741	*7741									*4143	*4143	4.86
9.0 m			*6243	*6243							*3198	*3198	7.4
7.5 m			*5399	*5399	*5836	*5836					*2861	*2861	8.81
6.0 m			*5311	*5311	*5996	*5996	*5824	3978			*2719	*2719	9.69
4.5 m			*7699	*7699	*7335	5823	6174	3911			*2688	2217	10.21
3.0 m			*11393	8791	*8306	5523	6030	3779	4364	2673	*2743	2075	10.44
1.5 m			*12068	8164	8499	5232	5876	3639	4312	2625	*2885	2059	10.4
Ground			*11483	7866	8280	5037	5763	3536	4278	2594	*3134	2170	10.1
-1.5 m	*5588	*5588	*9901	7825	*7575	4968	*5636	3499			*2804	2448	9.49
-3.0 m			*7450	*7450	*5842	5018	*3928	3558					
-4.5 m													



Load Point Height



Load Radius Over Front



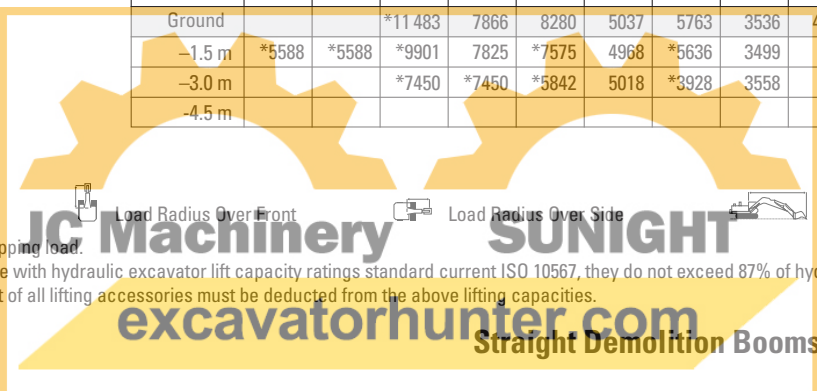
Load Radius Over Side



Load at Maximum Reach

* Limited by hydraulic rather than tipping load.

The above loads are in compliance with hydraulic excavator lift capacity ratings standard current ISO 10567, they do not exceed 87% of hydraulic lifting capacity or 75% of tipping capacity. Weight of all lifting accessories must be deducted from the above lifting capacities.




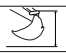
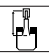
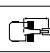
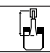
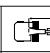
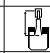
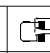
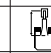
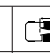
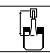
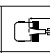
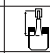
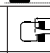
Lift capacities with Straight boom

All weights are in kg

325B L

Stick
R2.0D




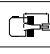
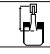
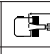
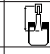
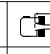
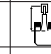
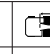
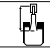
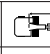
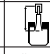
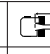
Shoes
TG 800 mm
Bucket Capacity
1.2 m³
Bucket Weight
970.4 kg

	3.0 m		4.5 m		6.0 m		7.5 m		9.0 m				m	
														
9.0 m			*10 660									*5399	6.54	
7.5 m			*10 261		*8908	6543						*4898	3880	8.11
6.0 m			*11 532	10 773	*8229	6483	6616	4196				*4708	3028	9.07
4.5 m					9718	6168	6561	4146				4257	2606	9.62
3.0 m					9262	5762	6391	3990				4011	2418	9.85
1.5 m					8896	5437	6224	3836				4005	2403	9.79
Ground					8726	5286	6129	3749				4257	2569	9.44
-1.5 m			*11 345	8364	8740	5298	6147	3765				*4450	2984	8.77
-3.0 m			*8599		*7125	5462								

325B L

Stick (Standard or Demolition)
R2.65C





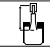
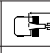
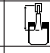
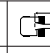
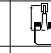
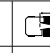
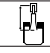
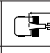
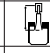
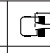
Shoes
TG 800 mm
Bucket Capacity
1.2 m³
Bucket Weight
842.5 kg

	3.0 m		4.5 m		6.0 m		7.5 m		9.0 m				m	
														
10.5 m												*4851	5.06	
9.0 m					*6331							*3852	7.45	
7.5 m					*7460	6915	*5247	4455				*3477	8.80	
6.0 m			*7336		*7965	6794	6954	4527				*3316	2877	9.65
4.5 m			*12 336	10 448	*9685	6492	6833	4415	4888	3077		*3277	2539	10.16
3.0 m					9619	6108	6642	4240	4850	3041		*3334	2385	10.37
1.5 m					9241	5771	6456	4070	4779	2976		*3492	2370	10.32
Ground			*8517		9018	5572	6329	3953	4736	2935		*3767	2499	10.01
-1.5 m			*13 194	8670	8958	5519	6291	3918				*4225	2821	9.39
-3.0 m			*10 697	8839	*8532	5594	*6183	3993				*4250	3712	8.01

325B L

Stick (Standard or Demolition)
R3.2C

Shoes
TG 800 mm
Bucket Capacity
1.2 m³
Bucket Weight
842.5 kg

	3.0 m		4.5 m		6.0 m		7.5 m		9.0 m				m	
														
10.5 m												*3603	6.23	
9.0 m					*5933							*2972	8.21	
7.5 m					*5899		*5536	4626				*2700	9.43	
6.0 m					*6202		*6266	4611	*3740	3140		*2579	2574	10.22
4.5 m			*8961		*8026	6609	6903	4474	4961	3141		*2553	2289	10.69
3.0 m			*13 979	9786	9732	6201	6687	4277	4877	3063		*2604	2153	10.89
1.5 m			*11 334	9006	9304	5820	6472	4080	4778	2970		*2733	2135	10.85
Ground			*10 049	8645	9019	5567	6310	3931	4703	2900		*2962	2238	10.54
-1.5 m	*5112		*13 309	8578	8901	5461	6234	3861	4687	2885		*3329	2496	9.97
-3.0 m	*9842		*11 878	8687	8932	5490	6264	3888				*3667	3016	9.05
-4.5 m			*8567		*6667	5654								



Load Point Height



Load Radius Over Front



Load Radius Over Side



Load at Maximum Reach

* Limited by hydraulic rather than tipping load.

The above loads are in compliance with hydraulic excavator lift capacity ratings standard current ISO 10567, they do not exceed 87% of hydraulic lifting capacity or 75% of tipping capacity. Weight of all lifting accessories must be deducted from the above lifting capacities.

JC Machinery **SUNIGHT**
excavatorhunter.com













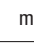

325B LN

Stick
R2.0D

Shoes
TG 600 mm

Bucket Capacity
1.2 m³

Bucket Weight
970.4 kg

	3.0 m		4.5 m		6.0 m		7.5 m		9.0 m				m
													
9.0 m			*10 660	9601							*5399	5209	6.54
7.5 m			*10 261	9843	*8908	5741					*4898	3365	8.11
6.0 m			*11 532	9463	*9229	5682	6346	3624			4626	2587	9.07
4.5 m					9351	5373	6292	3575			4062	2199	9.62
3.0 m					8894	4976	6121	3421			3820	2025	9.85
1.5 m					8529	4658	5955	3270			3814	2007	9.79
Ground					8358	4509	5859	3185			4056	2154	9.44
-1.5 m			*11 345	7130	8373	4521	5877	3201			*4450	2526	8.77
-3.0 m			*8599	7408	*7125	4682							













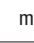

325B LN

Stick (Standard or Demolition)
R2.65C

Shoes
TG 600 mm

Bucket Capacity
1.2 m³

Bucket Weight
842.5 kg

	3.0 m		4.5 m		6.0 m		7.5 m		9.0 m				m
													
10.5 m											*4851		5.06
9.0 m					*6331	5895					*3852		7.45
7.5 m					*7460	6109	*5247	3883			*3477	3052	8.80
6.0 m			*7336		*7965	5991	6685	3954			*3316	2471	9.65
4.5 m			*12 663	9156	9684	5695	6563	3844	4675	2634	*3277	2160	10.16
3.0 m					9251	5319	6373	3672	4637	2599	*3334	2017	10.37
1.5 m					8873	4990	6187	3504	4567	2535	*3492	2001	10.32
Ground			*8517	7406	8650	4795	6060	3390	4523	2494	*3767	2115	10.01
-1.5 m			*13 194	7434	8589	4743	6021	3355			*4225	2403	9.39
-3.0 m			*10 697	7598	*8532	4816	6102	3429			*4250	3195	8.01











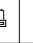

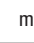

325B LN

Stick (Standard or Demolition)
R3.2C

Shoes
TC 600 mm

Bucket Capacity
1.2 m³

Bucket Weight
842.5 kg

	3.0 m		4.5 m		6.0 m		7.5 m		9.0 m				m
													
10.5 m											*3603		6.23
9.0 m					*5933						*2972		8.21
7.5 m					*5899		*5536	4050			*2700	2671	9.43
6.0 m					*6202	6116	*6266	4037	*3740	2696	*2579	2197	10.22
4.5 m			*8961		*8026	5809	6633	3901	4749	2697	*2553	1934	10.69
3.0 m			*13 979	8514	9364	5409	6418	3708	4665	2619	*2604	1806	10.89
1.5 m			*11 334	7758	8937	5037	6203	3513	4565	2528	*2733	1787	10.85
Ground			*10 049	7407	8651	4788	6041	3367	4490	2459	*2962	1878	10.54
-1.5 m	*5112		*13 309	7343	8532	4686	5965	3299	4474	2445	*3329	2109	9.97
-3.0 m	*9842		*11 878	7448	8564	4713	5994	3325			*3667	2576	9.05
-4.5 m			*8567	7699	*6667	4874							



Load Point Height



Load Radius Over Front



Load Radius Over Side



Load at Maximum Reach

* Limited by hydraulic rather than tipping load.

The above loads are in compliance with hydraulic excavator lift capacity ratings standard current ISO 10567, they do not exceed 87% of hydraulic lifting capacity or 75% of tipping capacity. Weight of all lifting accessories must be deducted from the above lifting capacities.

JC Machinery SUNIGHT

excavatorhunter.com

Straight Demolition Booms specifications

Lift capacities with Straight boom

All weights are in kg

330B L

Stick R2.15E
 Shoes TG 750 mm
 Bucket Capacity 1.7 m³
 Bucket Weight 1420 kg

	3.0 m	4.5 m	6.0 m	7.5 m	9.0 m	10.5 m	m							
10.5 m							*8255	*8255	5.56					
9.0 m	*12313		*12313	*10429	*9039			*7264	5977	7.79				
7.5 m	*12773		*12773	*10355	9291	*8914	5898			*6819	4352	9.06		
6.0 m	*14231		*14231	*10951	9045	*9012	5979			5775	3549	9.86		
4.5 m				*11780	8525	9211	5795			5205	3130	10.31		
3.0 m				*12381	7920	8918	5529	6459	3929			4968	2946	10.48
1.5 m				*12301	7459	8652	5288	6363	3840			4996	2949	10.38
Ground				*11403	7242	8489	5141	6308	3789			*4796	3154	10.00
-1.5 m	*11201		*11201	*9717	7233	*7542	5118					*3660	3648	9.31
-3.0 m				*7081	*7081	*4887	*4887							

330B L

Stick R2.8D
 Shoes TG 750 mm
 Bucket Capacity 1.2 m³
 Bucket Weight 970.4 kg

	3.0 m	4.5 m	6.0 m	7.5 m	9.0 m	10.5 m	m					
10.5 m	*12306		*12306					*5889	*5889	6.65		
9.0 m				*10084	9762			*5080	*5080	8.50		
7.5 m				*10151	9800			*4715	4179	9.67		
6.0 m	*12979		*12979	*10796	9519	*9065	6437	7014	4471	*4554	3535	10.41
4.5 m				11738	9018	*9471	6215	6988	4447	*4527	3180	10.85
3.0 m				*12574	8432	9321	5931	6861	4329	*4610	3015	11.02
1.5 m				12838	7948	9030	5669	6722	4201	*4810	3003	10.95
Ground				*12296	7669	8830	5487	6624	4111	*5023	3153	10.62
-1.5 m	*13349		11894	*10934	7584	*8541	5415	*6089	4100	4155	3515	10.01
-3.0 m	*10234		*10234	*8668	7659	*6557	5472			*3618	*3618	8.41

330B L

Stick R3.3D
 Shoes TG 750 mm
 Bucket Capacity 1.2 m³
 Bucket Weight 970.4 kg

	3.0 m	4.5 m	6.0 m	7.5 m	9.0 m	10.5 m	m						
10.5 m							*3965	*3965	7.51				
9.0 m				*9227	*9227	*6544	6485			*3444	*3444	9.15	
7.5 m				*9400	*9400	*8427	6639			*3194	*3194	10.22	
6.0 m	*9952		*9952	*10270	9680	*8703	6531	7139	4582	*3081	*3081	10.92	
4.5 m	*14943		14749	*11275	9171	*9173	6287	7048	4497	*3064	2910	11.33	
3.0 m	*17008		13325	*12250	8557	9381	5979	6888	4350	*3127	2760	11.50	
1.5 m	*11361			*12750	8017	9056	5685	6721	4196	*3275	2744	11.43	
Ground	*11870		11858	*12494	4669	8814	5466	6592	4076	*3525	2865	11.11	
-1.5 m	*7228	*7228	*14513	11790	*11422	7522	8692	5355	6537	4025	*3923	3165	10.53
-3.0 m	*11638		*11638	*9482	7544	*7294	5364	*4555	4097	*3340	*3340	9.48	
-4.5 m				*6395	*6395								

330B L

Stick R3.9D
 Shoes TG 750 mm
 Bucket Capacity 1.2 m³
 Bucket Weight 970.4 kg

	3.0 m	4.5 m	6.0 m	7.5 m	9.0 m	10.5 m	m								
12.0 m	*6944		*6944					*4242	*4242	6.11					
10.5 m				*7652	*7652			*3294	*3294	8.47					
9.0 m				*7676	*7676	*7198	6739			*2889	*2889	9.92			
7.5 m				*7499	*7499	*7791	6789	*6343	4685	*2680	*2680	10.9			
6.0 m				*8146	*8146	*8236	6651	7250	4677	*2581	*2581	11.55			
4.5 m	*12101		*12101	*10655	9372	*8770	6384	7119	4556	*5266	3272	*2561	*2561	11.94	
3.0 m	*16177		13791	*11773	8727	*9328	6049	6928	4380	5234	3214	*2609	2463	12.10	
1.5 m	*15509		12566	*12522	8119	9101	5717	6729	4196	5147	3132	*2725	2445	12.03	
Ground	*12759		11913	*12584	7688	8810	5453	6564	4044	5076	3066	*2928	2541	11.73	
-1.5 m	*6793	*6793	*15365	11694	*11851	7463	8634	5294	6467	3953			*3243	2778	11.20
-3.0 m	*11315	*11315	*13077	11736	*10284	7418	*7953	5253	*5767	3954			*3025	*3025	10.37
-4.5 m	*9536		*9536	*7704	7536	*5674	5349								

Load Point Height

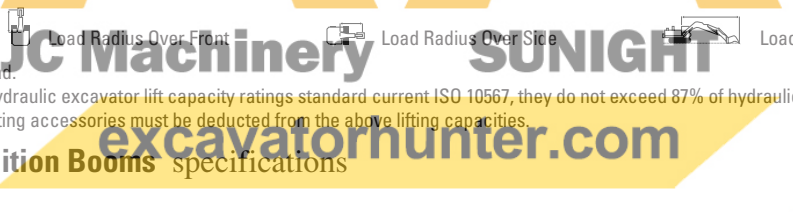
Load Radius Over Front

Load Radius Over Side

Load at Maximum Reach

* Limited by hydraulic rather than tipping load.

The above loads are in compliance with hydraulic excavator lift capacity ratings standard current ISO 10567, they do not exceed 87% of hydraulic lifting capacity or 75% of tipping capacity. Weight of all lifting accessories must be deducted from the above lifting capacities.



330B LN

Stick

R2.15E

Shoes

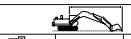
TG 600 mm

Bucket Capacity

1.7 m³

Bucket Weight

1420 kg

	3.0 m		4.5 m		6.0 m		7.5 m		9.0 m		10.5 m				m
10.5 m													*8255	*8255	5.56
9.0 m			*12313	*12313	*10429	8148							*7264	5381	7.79
7.5 m			*12773	*12773	*10355	8394	*8914	5276					6746	3875	9.06
6.0 m			*14231	13434	*10951	8154	*9012	5355					5641	3127	9.76
4.5 m					*11780	7644	9020	5174					5079	2734	10.31
3.0 m					*12381	7053	8727	4913	6309	3454			4844	2559	10.48
1.5 m					*12136	6602	8461	4676	6213	3366			4871	2557	10.38
Ground					*11403	6389	8298	4530	6158	3316			*4796	2743	10.00
-1.5 m			*11201	10070	*9717	6381	*7542	4509					*3660	3195	9.31
-3.0 m					*7081	6543	*4887	4648							

330B LN

Stick

R2.8D

Shoes

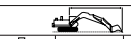
TG 600 mm

Bucket Capacity

1.2 m³

Bucket Weight

970.4 kg

	3.0 m		4.5 m		6.0 m		7.5 m		9.0 m		10.5 m				m
10.5 m			*12306	*12306									*5889	*5889	6.65
9.0 m					*10084	8864							*5080	4891	8.50
7.5 m					*10151	8901	*8861	5878					*4715	3745	9.67
6.0 m			*12979	*12979	*10796	8626	*9065	5812	6864	3995			*4554	3143	10.41
4.5 m					*11738	8135	9442	5594	6838	3971			*4527	2810	10.85
3.0 m					*12574	7563	9129	5315	6710	3855			*4610	2653	11.02
1.5 m					12638	7089	8839	5056	6572	3729			4781	2639	10.95
Ground					*12296	6816	8639	4878	6474	3639			5009	2774	10.62
-1.5 m			*13349	10500	*10934	6732	*8541	4807	*6086	3628			*4155	3015	10.01
-3.0 m			*10234	*10234	*8668	6807	*6557	4862					*3618	*3618	8.41

330B L

Stick

R3.3D

Shoes

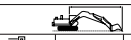
TG 600 mm

Bucket Capacity

1.2 m³

Bucket Weight

970.4 kg

	3.0 m		4.5 m		6.0 m		7.5 m		9.0 m		10.5 m				m
10.5 m													*3965	*3965	7.51
9.0 m					*9227	9081	*6544	5858					*3444	*3444	9.15
7.5 m					*9400	9068	*8427	6009					*3194	*3194	10.22
6.0 m			*9952	*9952	*10270	8782	*8703	5903	6989	4103			*3081	2849	10.92
4.5 m			*14943	13292	*11275	8283	*9173	5663	6898	4020			*3064	2560	11.33
3.0 m			*17008	11883	*12250	7683	9189	5361	6738	3874			*3127	2418	11.50
1.5 m			*11361	10877	12728	7155	8865	5071	6571	3722			*3275	2399	11.43
Ground			*11870	10462	12330	6815	8625	4856	6442	3603			*3525	2508	11.11
-1.5 m	*7228	*7228	*14513	10397	*11422	6671	8501	4756	6387	3553			*3923	2782	10.53
-3.0 m			*11638	10532	*9482	6692	*7294	4756	*4555	3624			*3340	*3340	9.48
-4.5 m					*6395	*6395									

330B LN

Stick

R3.9D

Shoes

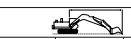
TG 600 mm

Bucket Capacity

1.2 m³

Bucket Weight

970.4 kg

	3.0 m		4.5 m		6.0 m		7.5 m		9.0 m		10.5 m				m
12.0 m			*6944	*6944									*4242	*4242	6.11
10.5 m					*7652	*7652							*3294	*3294	8.47
9.0 m					*7676	*7676	*7198	6106					*2889	*2889	9.92
7.5 m					*7499	*7499	*7791	6156	*6343	4203			*2680	*2680	10.90
6.0 m					*8146	*8146	*8236	6020	7100	4196			*2581	2513	11.55
4.5 m			*12101	*12101	*10655	8478	*8770	5758	6968	4076	5172	2885	*2561	2268	11.94
3.0 m			*16177	12331	*11773	7847	9276	5428	6778	3903	5111	2828	*2609	2142	12.10
1.5 m			*15509	11145	*12522	7253	8910	5101	6579	3720	5023	2747	*2725	2121	12.03
Ground			*12759	10512	*12584	6831	8619	4841	6414	3570	4653	2682	*2928	2207	11.73
-1.5 m	*6793	*6793	*15365	10301	*11851	6610	8443	4685	6317	3481			*3243	2424	11.20
-3.0 m	*11315	*11315	*13077	10342	*10284	6567	*7953	4644	*5767	3483			*3025	2843	10.37
-4.5 m			*9536	*9536	*7704	6681	*5674	4739							

Lift capacities with Straight boom

All weights are in kg

345B L

Stick

D2.9T

Shoes

TG 600 mm

Bucket Capacity

2.0 m³

Bucket Weight

2090 kg

	3.0 m		4.5 m		6.0 m		7.5 m		9.0 m		m		
12.0m											*6620	*6620	5.55
10.5 m					*10 420	*10 420					*5160	*5160	8.19
9.0 m					*11 790	*11 790	*9940	9220			*4580	*4580	9.69
7.5 m			*11 030	*11 030	*12 200	*12 200	*10 500	9220	*6610	6270	*4300	*4300	10.68
6.0 m			*16 650	*16 650	*13 450	13 350	*10 820	8940	*9010	6250	*4190	*4190	11.32
4.5 m					*14 470	12 490	*11 240	8520	*9100	6070	*4200	3890	11.68
3.0 m					*15 110	11 640	*11 500	8080	*9070	5840	*4320	3740	11.79
1.5 m					*14 830	11 050	*11 300	7720	*8750	5640	*4550	3780	11.66
Ground					*13 480	10 780	*10 450	7510	*7900	5530	*4240	4050	11.28
-1.5 m			*12 600	*12 600	*11 160	10 760	*8770	7460	*6240	5530	*2890	*2890	10.64
-3.0 m				*7800	*7800	*6000	*6000						

345B L

Stick

D3.35T

Shoes

TG 600 mm

Bucket Capacity

2.0 m³

Bucket Weight

2090 kg

	4.5 m		6.0 m		7.5 m		9.0 m		10.5 m		m		
12.0m	*9920	*9920									*5340	*5340	6.62
10.5 m			*9890	*9890							*4280	*4280	8.84
9.0 m			*9820	*9820	*9340	*9340					*3810	3810	10.24
7.5 m			*9950	*9950	*10 130	9360	*8260	6440			*3570	*3570	11.17
6.0 m	*11 580	*11 580	*12 040	*12 040	*10 520	*9070	*8820	6350			*3470	*3470	11.77
4.5 m	*19610	*19610	*14 120	12 750	*11 040	8650	*8990	6140	*6410	4410	*3480	*3480	12.11
3.0 m			*15 000	11 880	*11 430	8190	*9070	5900	*7140	4310	*3590	3460	12.22
1.5 m			*15 060	11 220	*11 410	7810	*8880	5680	*6690	4220	*3800	3500	12.10
Ground	*10 790	*10 790	*14 060	10 870	*10 780	7550	*8240	5530	*5660	4180	*4140	3720	11.74
-1.5 m	*14 560	*14 560	*12 050	10 780	*9370	7460	*6900	5480			*3000	*3000	11.13
-3.0 m	*10 270	*12 270	*9020	*9020	*6970	*6970	4360	4360					

345B L

Stick

D3.35T

Shoes

TG 600 mm

Bucket Capacity

2.0 m³

Bucket Weight

2090 kg

	4.5 m		6.0 m		7.5 m		9.0 m		10.5 m		m				
12.0m			*6350	*6350							*4010	*4010	7.90		
10.5 m			*8130	*8130	*6760	*6760					*3280	*3280	9.76		
9.0 m					*7760	*7760	*5770	*5770			*2980	*2910	11.0		
7.5 m			*7400	*7400	*8040	*8040	*7600	6540			*2720	*2720	11.86		
6.0 m			*8540	*8540	*9020	*9020	*8370	6400	*5970	4490	*2640	*2640	12.43		
4.5 m		*18 210	*18 210	*13 340	13 020	*10 520	8740	*8630	6150	*7160	4400	*2650	*2650	12.75	
3.0 m				*14 470	12 070	*11 060	8240	*8830	5870	*7120	4260	*2730	*2730	12.85	
1.5 m				*14 930	11 280	11 270	7780	*8820	5610	*6880	4120	*2910	*2910	12.73	
Ground		*12 000	*12 000	*14 410	10 790	*10 930	7460	*8410	5410	*6270	4020	*3180	*3180	12.40	
-1.5 m	*6990	*6990	*15 830	*15 830	*12 880	10 580	*9870	7290	*7440	5310	*4960	4010	*2910	*2910	11.83
-3.0 m		*12 650	*12 650	*10 330	*10 330	*7940	7290	*5600	5330			*2560	*2560	10.54	
				*6610	*6610	*4820	*4820								



Load Point Height



Load Radius Over Front



Load Radius Over Side



Load at Maximum Reach

* Limited by hydraulic rather than tipping load.

The above loads are in compliance with hydraulic excavator lift capacity ratings standard current ISO 10567, they do not exceed 87% of hydraulic lifting capacity or 75% of tipping capacity. Weight of all lifting accessories must be deducted from the above lifting capacities.

JC Machinery **SUNIGHT**
excavatorhunter.com

Optional Equipment

The optional attachment may vary depending on model. Please refer to standard machine specalogs.

Auxiliary hydraulics

- Single function
(one way) control
including 2-pump flow capability
- Combined function
(one way – two way) control
including 2-pump flow capability
- Medium pressure auxiliary
hydraulic circuit
- Two speed capability for
single function control
- Auxiliary hydraulic lines for
boom and sticks
- Magnet generator control
Generator, for magnet operation

Bucket and stick family

- 320B L/LN – B and C linkage
- 322B L/LN – B and C linkage
- 325B L/LN – D and E linkage
- 330B L/LN – C and D linkage
- 345B L – T linkage
- Bumper-reinforced skirts
- Cab riser, fixed,
700 -1200 - 1600 mm
- Check valves
 - Boom lowering
 - Stick lowering
- Cooling system, High ambient
- Fine swing control valve

Guards

- Full length track guiding guards
- Falling object guard
- Oil, HEES, bio hydraulic
- Precleaner, Sy-klone, separated
- Reinforced demolition stick
- Swing out oil-cooler
- Track
 - Track options are similar to standard
machine offering.



320B L/LN, 322B L/LN, 325B L/LN, 330B L/LN, 345B L Straight Demolition Booms

HEHH2193-1 (0499) hr

Materials and specifications are subject to change without notice.
Featured machines in photos may include additional equipment.
See your Caterpillar dealer for available options.

© 1998 Caterpillar



CATERPILLAR®